

# Yearly Inspection program

The Yearly Inspection is to create a repetitive yearly routine and review the condition of the Product.

- Identify the ladders ID number – you find the ID under the bottom rung
- Fill in ID in the matrix below, which follows the Products entire lifecycle
- Follow instructions of BEFORE and AFTER USE
- If needed, perform repairs (only by authorized personnel!)
- Repairs to be noted in the matrix
- Sign for each performed inspection

Product Line			
Purchase date			
ID			
Year	Date	Note	Signature
1			
2			
3			
4			
5			
6			
7			
8			
9			
10			





## Be SAFE by taking care of your Ladder

**USTEPS® Maintenance Guide is a concept for Your Safety.**

For reasons of **safety** and **functionality**, the telescopic product must always be kept clean, particularly the telescopic tubes and rungs. Dirt, filings, paint spots, glue etc. must be cleaned after each use, and before the ladder is closed. If your ladder is soaking wet, fully extend the ladder, wipe off and keep it extended until the ladder are completely dry.

The ladder is not safe if any of the parts are damaged or worn out. Don't use the ladder if needs to be repaired. Replace damaged parts or/and contact your authorized service workshop for assistance. Any repair work must always be carried out by an authorized service workshop.

Treat your USTEPS® Products with care and it will retain its unique properties. Follow strictly recommendations and steps, in order to always have a safe product ready for your daily challenges: **BEFORE USE – AFTER USE – YEARLY INSPECTION**

## Maintenance Kit

To even **extend** the functionality and secure **the safety** of your ladder we have created a maintenance kit including a cleaning sponge and a microfiber towel.

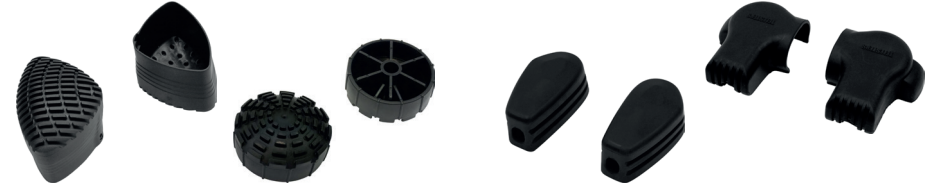
USTEPS® unique melamine cleaning sponge easily solves the task without damaging the surface. A problem solving product for maintaining your product and removing hard stains and ingrown dirt. Moisten only with water, no chemicals needed. USTEPS® thinks about your safety and the environment.



## Spare parts

**Our high quality makes the products last a long time. Very long time.**

This causes parts to wear out and sometimes have to be replaced. On our website you can find some of our spare parts that you can easily replace yourself to maintain the high level of safety.



### Rubber feet kit

No matter what ladder line you have purchased we can offer you new rubber feet.

### Rubber top

For our leaning ladders and Combi Line you can update your rubber tops when ever you need.

## Before Use

- Your ladder is a precision tool, handle with care
- Ensure that you are fit to use the ladder
- Ocular inspection for buckles, fractures
- Locking of rungs works properly - open/close
- Red buttons under the rungs are visible
- Rubber top and foot in proper condition
- Test that brake function is working
- Rungs and dirt channels are clean
- Accessories assembled works properly
- Make sure all instruction labels are intact and readable

## After Use

- Clean the ladder properly from all dust
- If the ladder is wet, fully extend the ladder and wipe off
- If your ladder is soaking wet, fully extend the ladder, wipe off and keep it extended until the ladder is completely dry
- Ocular inspection for buckles, fractures
- Store the ladder in dry environment